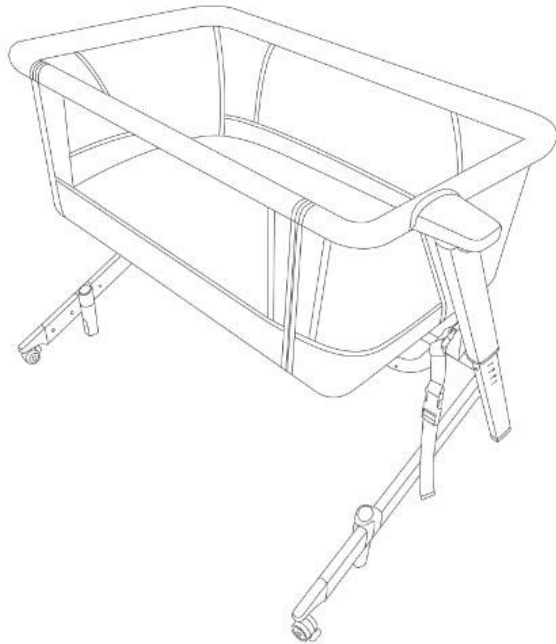


Bedside Sleeper

IMPORTANT – KEEP FOR FUTURE REFERENCE. READ CAREFULLY.



⚠️ WARNING:

- Read all of the instructions before assembling and using the product.
- Assemble product according to manufacturer's instructions for ANY of the uses (Bedside Sleeper or bassinet).

⚠️ WARNING: FAILURE TO FOLLOW THESE WARNINGS AND THE INSTRUCTIONS COULD RESULT IN SERIOUS INJURY OR DEATH. DO NOT USE THIS PRODUCT IF YOU CANNOT EXACTLY FOLLOW THE INSTRUCTIONS THAT COME WITH IT. THIS PRODUCT SHOULD BE FULLY ASSEMBLED PRIOR TO USE.

SUFFOCATION HAZARD

Infants have suffocated:

- In gaps between extra padding and side of the bassinet
- on soft bedding.

Use only the pad provided by Evolur. Never add a pillow, comforter, or another mattress for padding.

- If a sheet is used with the pad, use only the one provided by Evolur or one specifically designed to fit the dimension of the mattress pad.
- Never leave infant in bassinet with the sides down unless it is securely positioned in sleeper mode attached to the adult bed with anchors securely in place.
- To reduce the risk of SIDS, pediatricians recommend healthy infants be placed on their backs to sleep, unless otherwise advised by your physician.

ENTRAPMENT HAZARD:

- To prevent death from entrapment, Bedside Sleeper must be properly secured to adult bed using the attachment system.
- There must be no more than 1/2 inch (13mm) gap between bedside sleeper and adult bed.
- Check tightness before each use by pulling on the Bedside Sleeper away from the adult bed.
- If gap exceeds 1/2 inch (13mm), DO NOT use product. Do not fill the gap with pillows, blankets or other items that can cause suffocation.

- Always read and follow assembly instructions for each product use (bedside sleeper or bassinet).
- Please use ALL required parts for each use (bedside sleeper or bassinet).

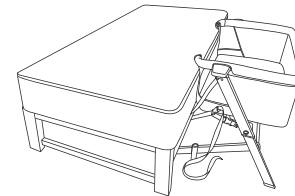
FALL HAZARD:

- A bassinet is designed to provide a sleeping area for an infant until he or she begins to push up on hands and knees or can roll over, or has reached 25lbs, whichever comes first, which is about 5 months of age.
- Please use all required parts for each use (bedside sleeper or bassinet).
- Check instruction manual for a list of required parts.
- Periodically check product for loose, damaged, or missing parts. DO NOT use product if any part is loose or missing, or if there are any signs of damage. DO NOT substitute parts.
- Contact Dream On Me if replacement parts or instructions are needed.
- In Bassinet Mode, make sure that side panel is locked.

WARNING - CONTINUED:

- Strings can cause strangulation. NEVER place product near window blinds or patio doors with cords where a child could reach the cord and be strangled, or hang strings over the product or place items with a string around an infant's neck or attach strings to toys.
- DO NOT place any cord or strap or similar items in or near this product that could become wrapped around a child's neck.
- Strings can cause strangulation. DO NOT place anything with a string around a child's neck, such as hood strings or pacifier cords. DO NOT suspend strings over a bassinet or cradle or attach strings to toys.

NEVER USE THIS PRODUCT IN BEDSIDE SLEEPER MODE WITHOUT THE FIXING BUCKLES SECURELY ATTACHED TO THE ADULT BED.

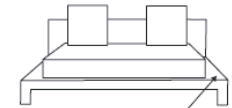


ACCEPTABLE BED
FRAME IN-LINE



MATTRESS, BOXSPRINGS &
FRAME ALIGNED

UNACCEPTABLE BED,
MATTRESS, BOXSPRING
& FRAME NOT IN-LINE



FRAME
EXTENDED

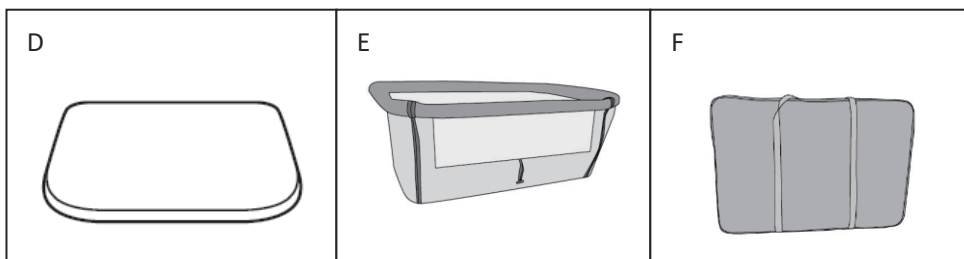
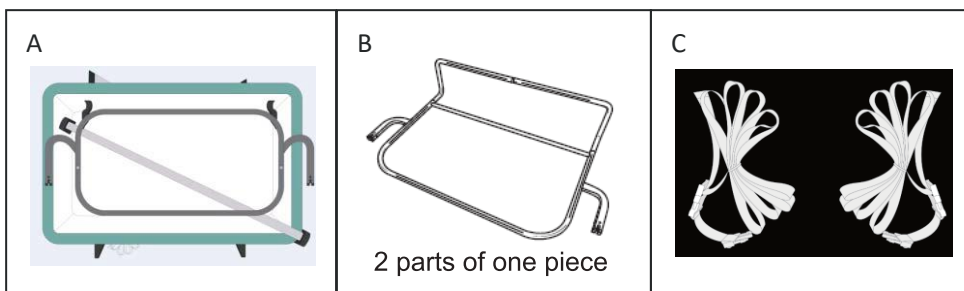
SUFFOCATION, ENTRAPMENT AND FALL HAZARDS:

- To use bassinet mode, ALWAYS raise the side with the zipper to completely close up all 4 sides.
- ALWAYS push adult mattress against beside sleeper after securing to bed with safety strap and fixing buckles.
- NEVER leave infant in bassinet with the sides down.
- The bedside sleeper is designed for use only with adult beds that are between 18.5 - 24 inches (47 - 60 cm) from floor to top of adult mattress.
- The fixing buckles and straps assembly must always be used in bedside sleeper mode. Product in bedside sleeper mode must be tightly attached to adult bed mattress to ensure safe use.
- It is recommended to make the straps shorter than the width of the mattress to ensure bedside sleeper is pressed securely and tightly against the adult bed, without any gaps.
- A bedside sleeper is designed to provide a sleeping area for an infant until he or she begins to push up on hands and knees or can roll over, or has reached 25lbs, whichever comes first. Move your child to another sleeping product when your child reaches this stage.

COMPONENTS

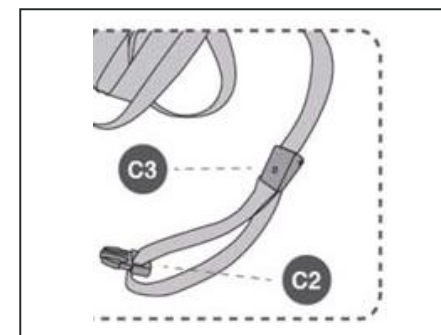
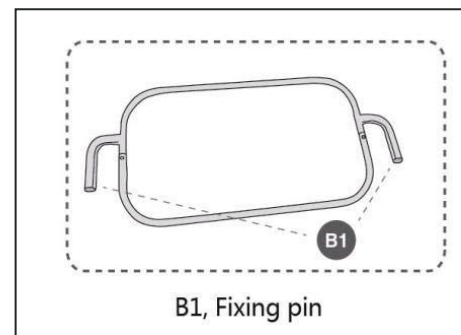
Please check to make sure that all of the following parts listed below are included in the box when opened. If there are any missing parts, please contact Evolur before using the product.

- A. Central supporting structure
- B. Middle support frame
- C. Fixing belts
- D. Mattress with removable cover
- E. Fabric lining
- F. Outer travel bag
- G. Fixing steel bar



- A1. Height adjuster button
- A2. Middle support frame release button
- A3. Adjustable feet with wheels and brakes
- A4. Non-slip feet
- A5. Adjustable feet rotate button
- A6. Front bar release button

- B1. Fixing pin
- C2. Fixing male buckles
- C3. Belt length adjust buckles
- E1. Belt with clip
- E2. Zip for fabric removal
- E3. Zip for bedside sleeper opening
- E4. Mesh window
- E5. Side support for restraint

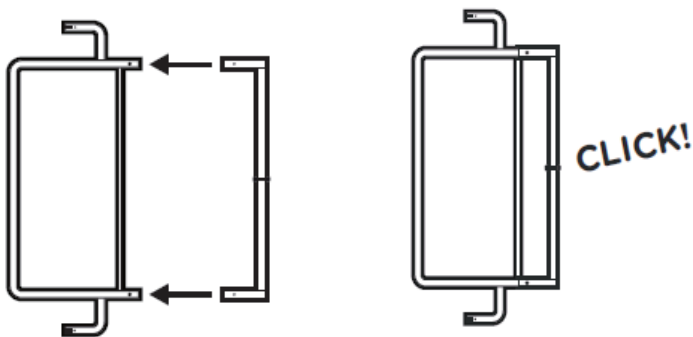


ASSEMBLING THE BASSINET

1. Hold the central supporting structure (A) and turn both legs outward as shown below.



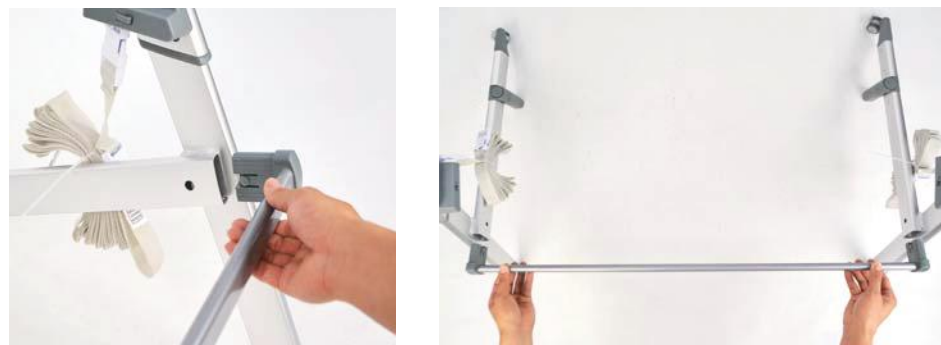
2. Insert the side rail into the middle support frame (B) by lining up the buttons and holes until you hear a click as shown below.



3. Select the middle support frame (B) and gently push it into the side slots until you hear a click as shown below. Make sure that the curved bar is facing downward as shown below.



4. Select the fixing steel bar (G) and insert it into the side slots as shown below.

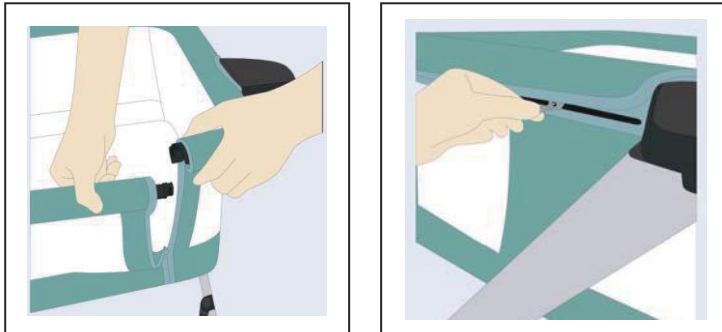


⚠ WARNING: DO NOT use bedside sleeper if any parts are missing, damaged, or broken. Contact Evolur for replacement parts and instructions if needed. DO NOT substitute parts.

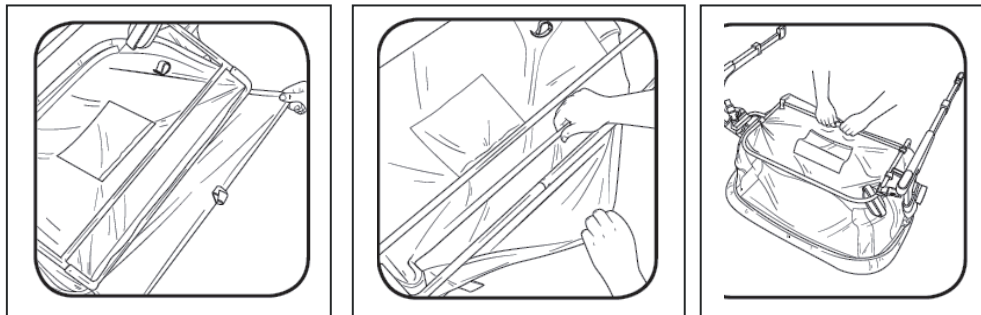
5. Fix the fabric lining (E) to the central supporting structure (A). Hook the 2 loops on the bottom of the lining



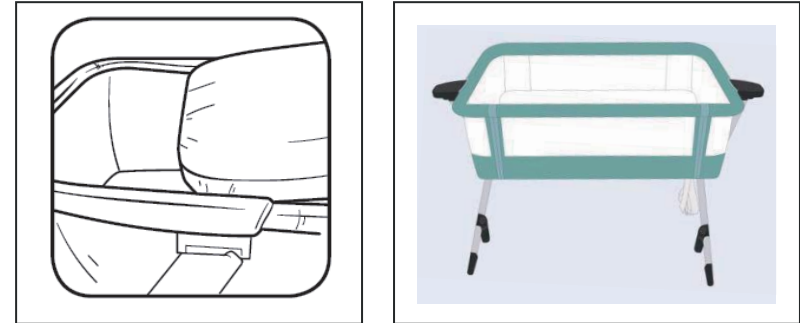
6. Fix the top rail on both sides and zip up the front panel.



7. Lift the side panel fabric cover over the curve bar. Then, loop the 5 loop fasteners.



8. Place the mattress pad into the bedside sleeper

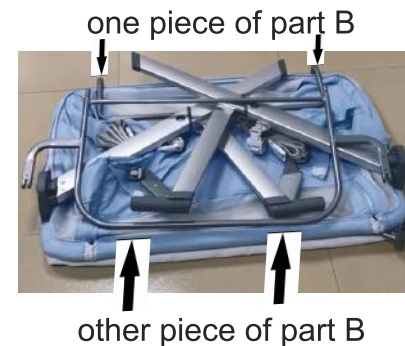


To Fold and Store the Bedside Sleeper

9. To fold and store, remove parts B, D, and G and adjust the height at the lowest position. Next, place the mattress pad on the floor and place part G diagonally across as shown below. Next, fold the bedside sleeper and place it on top of part D and G as shown below. Be sure to fold the ends of the legs inward.

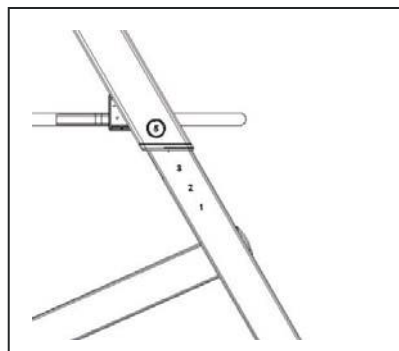
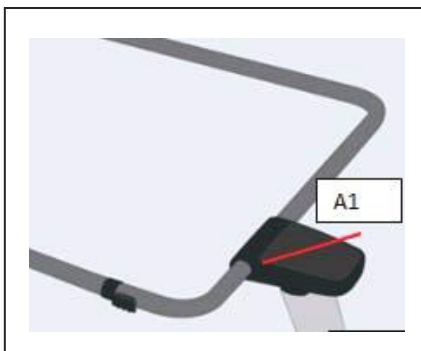


10. Next, place the 2 parts of part B on top of the folded bedside sleeper as shown below. Next, stick the product onto the carry bag.

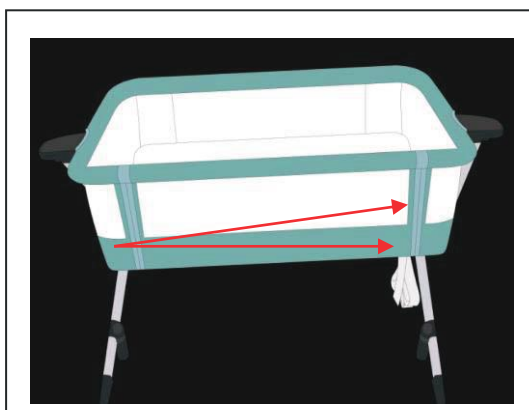


TO ADJUST THE HEIGHT

1. The bedside sleeper can be adjusted to different height positions. In order to adjust the height, press the height adjuster button (A1) on both sides of the cot to the desired position.



2. The base should NEVER be inclined by adjusting the legs to different heights.



3. The bedside sleeper is designed for use only with adult beds that are between 18.5 and 24 inches (45 - 55 cm) from the floor to the top of adult mattress.

⚠ WARNING! - IMPORTANT FOR THE SAFETY OF YOUR CHILD:

THIS METHOD IS ONLY COMPATIBLE WITH BED TYPES THAT COMPLY WITH ALL OF THE CONDITIONS DESCRIBED HERE:

- THE SIDE SUPPORT OF THE BEDSIDE SLEEPER SHOULD ALWAYS BE PLACED CLOSE TO THE ADULT MATTRESS.
- THE MATTRESS SHOULD ALWAYS BE ALIGNED WITH THE HEIGHT OF THE SIDE SUPPORT OF THE CO-SLEEPER.
- THE BEDSIDE SLEEPER SHOULD BE FIRMLY FIXED TO THE STRUCTURE OF THE ADULT BED OR TO THE MATTRESS SUPPORT.

⚠ WARNING!

CHECK TO MAKE SURE THAT THE BEDSIDE SLEEPER IN THE BEDSIDE SLEEPER MODE DOES NOT INTERFERE WITH THE ADULT BED.

⚠ WARNING!

DURING USE, MAKE SURE THAT THE ADULT BED SHEETS, BLANKETS ETC, DO NOT ENTER THE BEDSIDE SLEEPER AND COVER THE INTERIOR OF THE BEDSIDE SLEEPER. THIS CAN CAUSE SUFFOCATION.

CO-SLEEP MODE (FIXING TO THE BED)

⚠ WARNING! - IMPORTANT FOR THE SAFETY OF YOUR CHILD:

THIS METHOD IS ONLY COMPATIBLE WITH BED TYPES THAT COMPLY WITH ALL OF THE CONDITIONS DESCRIBED HERE:

- THE SIDE SUPPORT OF THE BEDSIDE SLEEPER SHOULD ALWAYS BE PLACED CLOSE TO THE ADULT MATTRESS.
- THE MATTRESS SHOULD ALWAYS BE ALIGNED WITH THE HEIGHT OF THE SIDE SUPPORT OF THE CO-SLEEPER.
- THE BEDSIDE SLEEPER SHOULD BE FIRMLY FIXED TO THE STRUCTURE OF THE ADULT BED OR TO THE MATTRESS SUPPORT.

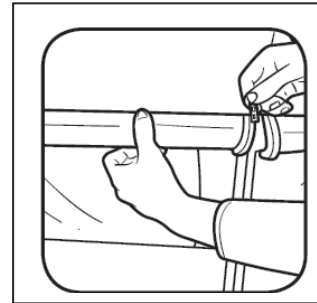
⚠ WARNING!

CHECK TO MAKE SURE THAT THE BEDSIDE SLEEPER IN THE BEDSIDE SLEEPER MODE DOES NOT INTERFERE WITH THE ADULT BED.

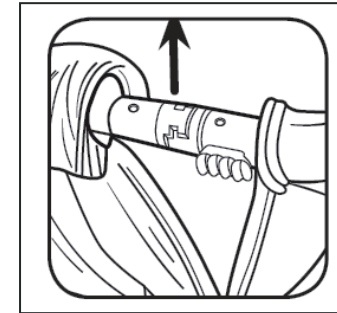
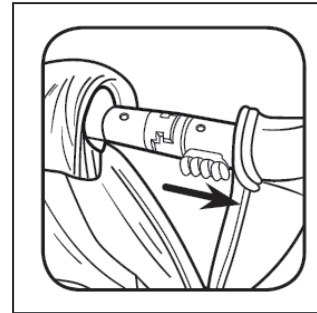
⚠ WARNING!

DURING USE, MAKE SURE THAT THE ADULT BED SHEETS, BLANKETS ETC, DO NOT ENTER THE BEDSIDE SLEEPER AND COVER THE INTERIOR OF THE BEDSIDE SLEEPER. THIS CAN CAUSE SUFFOCATION.

1. Unzip the sides of the bedside sleeper until they are completely unzipped.



2. Slide the top bar lock lever and lift the top bar out of the grooves on both sides and fold down.



3. Move the bedside sleeper close to the parent's bed and check the height of the bedside sleeper compared with the adult mattress on the adult bed. The side support of the sleeper should always be placed close to the adult mattress and the mattress should always be aligned with the height of the side support for restraint of the sleeper.

4. To avoid injury from infant's neck being caught on the top rail on the side that is next to the adult bed, the top rail must be no higher than the adult bed mattress.

! WARNING!

IN THE BEDSIDE SLEEPER MODE , THE TWO LEGS OF THE BEDSIDE SLEEPER SHOULD ALWAYS BE ADJUSTED TO THE SAME HEIGHT.

5. In order to attach the bedside sleeper to the parent's bed, use the attached fixing buckles provided.

! WARNING!

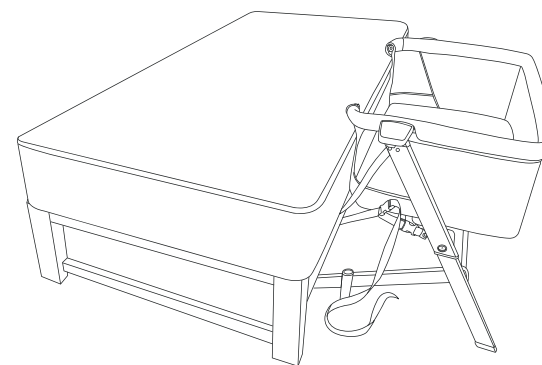
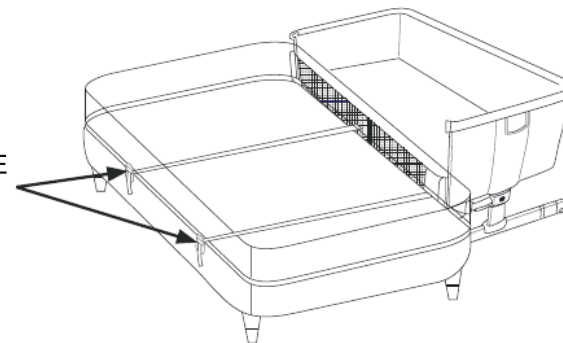
ENSURE THAT THE FIXING BUCKLES ARE STRAIGHT AND NOT LOOSE.

! WARNING!

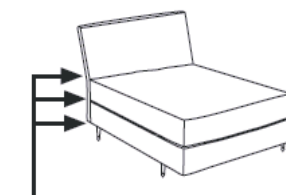
When the bedside sleeper is attached/tied to the bed, that the actual bassinet must remain straight and not lopsided. If the bassinet is not straight/flat, contact our customer service immediately for help.

6. Pass the fixing belt under the bed to the other side of by pulling belts firmly until the straps are in the correct position as shown in the images below.

NEVER USE THIS PRODUCT IN BEDSIDE SLEEPER MODE WITHOUT THE FIXING BUCKLES SECURELY ATTACHED TO THE ADULT BED

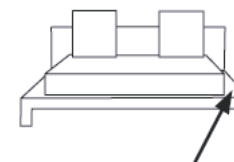


**ACCEPTABLE BED FRAME
IN-LINE**



MATTRESS, BOXSPRINGS &
FRAME ALIGNED

**UNACCEPTABLE BED, MATTRESS,
BOXSPRING & FRAME NOT IN-LINE**



FRAME EXTENDED

WARNING!

THE ATTACHMENT SYSTEM MUST ALWAYS BE USED IN BEDSIDE SLEEPER MODE.

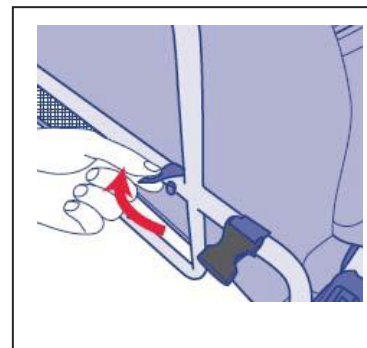
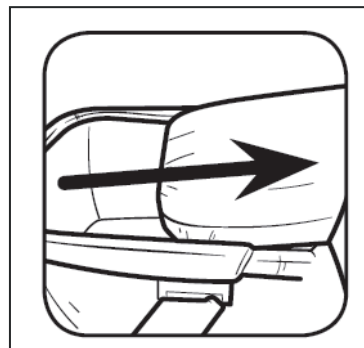
WARNING!

- BEFORE EVERY USE, CHECK TO MAKE SURE THAT THERE IS NO SPACE BETWEEN THE ADULT MATTRESS AND THE SIDE OF THE BEDSIDE SLEEPER. IF THERE IS, PULL THE BELTS FIRMLY TO TIGHTEN UNTIL THERE'S NO SPACE.
- USE OF PRODUCT IS ONLY PERMITTED WITH BEDS AND/OR MATTRESSES WITH STRAIGHT SIDES. DO NOT USE PRODUCT WITH A ROUND MATTRESS OR A WATER BED.
- WHEN THE PRODUCT IS USED IN THE BEDSIDE SLEEPER MODE, IT SHOULD ALWAYS BE FITTED TO THE LONG SIDE OF THE BED. DO NOT FIX THE PRODUCT TO THE SHORT SIDE OF THE BED.

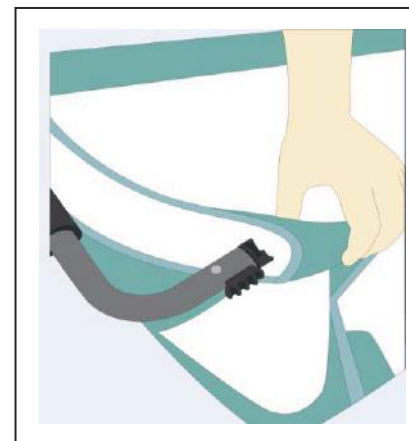
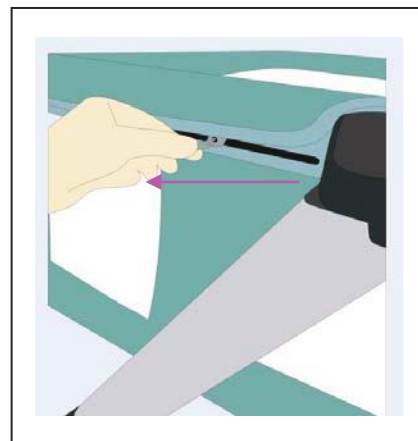
CARE & CLEANING

Remove the cover:

1. Remove the mattress and release the velcro tabs from the middle support frame on the underside of the bedside sleeper.



2. Unzip the zipper underneath the fabric lip on the upper frame. Pull out the removable fabric lining (E) from the upper frame. Pay attention not to damage the internal lining.



MAINTANCE ADVICE

- The product has a resistant fabric cover which is completely removable and washable.
- The removal/application activities should be carried out by adults only. On a regular basis, check the condition of the product for any possible damage. In the case of damage, do not use it and keep it out of the reach of children.
- For washing of the fabric, carefully comply with instructions indicated on the label.
- For cleaning, do not use solvents, abrasive or aggressive products.



Hand wash in cold water



Do not bleach



Do not tumble dry



Do not iron



Do not dry clean

After each wash, check the resistance of the fabric and of the stitching.

WARNING: During the removal/or application of the lining, handle the fabric carefully in order to avoid accidental damage or tears.

WARNING: The removal and/or application operations may take a few minutes and should be carried out by adult.

Thank you for choosing Evolur and congratulations on joining The DOM Family, a family that has been transforming lives for 30 years! We appreciate your feedback and wish you the very best in the coming years with your new addition. If you have any questions or concerns please don't hesitate to reach out and a trusted DOM representative will assist you. Thank you again for entrusting us to supply you with the safest, functional and affordable baby products and accessories. Feel free to follow us on Facebook and Instagram for further opportunities and offers.

Gracias por elegir Evolur y felicitaciones por unirse a La Familia, una familia que se ha estado expandiendo durante 30 años! Agradecemos sus comentarios y le deseamos lo mejor en los próximos años con su nueva Adición. Si tiene alguna pregunta inquietud, no dude en comunicarse con un representante de DOM de confianza para que lo ayude. Nuevamente, gracias por confiarnos el suministro de los productos y accesorios para bebés más funcionales y económicos. Siéntase libre de seguirnos en Facebook e Instagram para más oportunidades y ofertas.

évolur
evolving with your baby

Dream On Me Inc.
1532 S Washington Ave Piscataway Twp. NJ 08854
Tel: 732-752-7220
Fax: 732-752-7221



1532, S. Washington Avenue
Piscataway, NJ 08854
E-mail: info@evolurbaby.com

www.evolurbaby.com

Follow us on



@EvolurBaby



@evolurbaby

to get your nursery featured on our social media.

Enter our monthly giveaway!

Simply scan the QRcode to register.



Chat with us!

For any questions or concerns or feedback.

