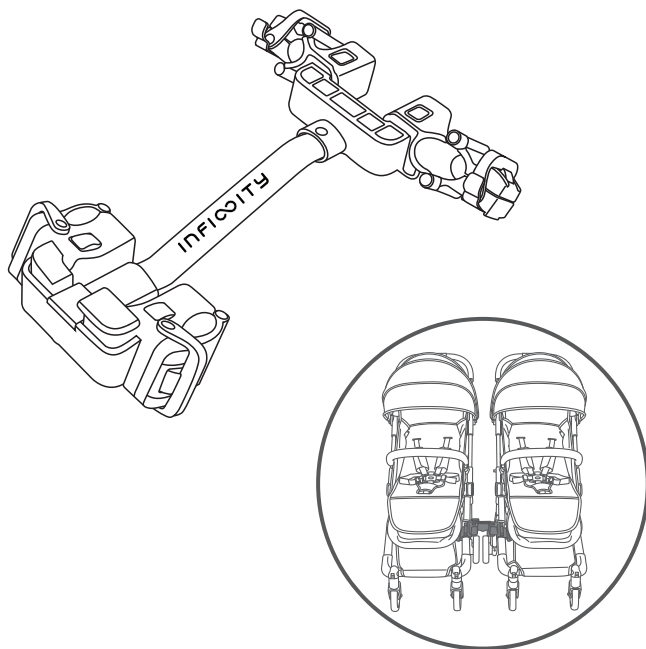


MODEL NO.:#366
USER MANUAL

Infinity Twin Connector

Compatible with: Evolur Infinity Baby Stroller, #478



Scan the QR code to register your product

<https://www.evolurbaby.com/customer-care/product-registration/>



Important: Keep these instructions for future reference.

WARNING

IMPORTANT!

Failure to follow these warnings and the assembly instructions could result in serious injury or death. To ensure proper use, store this user guide in a convenient place so it can be consulted when needed.

Read these instructions carefully before using this product.

Always push both stroller handle at same time when using the twin connector.

- **ADULT ASSEMBLY REQUIRED.**
- **NEVER LEAVE CHILD UNATTENDED.** Always keep child in view while in stroller.
- Avoid serious injury from falling or sliding out. Always use harness to secure child.
- Avoid finger entrapment or injury. Always ensure any child occupants or bystanders are away from the stroller while folding or unfolding.
- Always make sure that the stroller is fully open and locked before use.
- Always set the parking brake when parking the stroller.
- Do not hang or place items on the stroller handle or frame except for those approved by Evolur. They may cause an unstable or hazardous condition.
- Only use Evolur approved child restraints, accessories, and replacement parts with this stroller.
- Do not overload basket – Maximum weight in basket is 10 lbs (4.5 kg). Overloading the basket may cause the stroller to become unstable.
- Do not allow children to climb on or play with the stroller.
- Never use stroller on stairs or escalators.
- Stroller is intended for walking speed only. Do not use while jogging, skating, etc.

CARE AND MAINTENANCE

FRAME:

Wipe the frame with a damp cloth and mild soap. Use a clean, dry cloth or towel to wipe away excess water and soap.

PLASTIC PARTS :

Wipe with a damp cloth and mild soap. Use a clean, dry cloth or towel to wipe away excess water and soap.

Do not use abrasives, solvents, strong detergents, or household cleaners. These products can scratch, discolor, and weaken the plastic or cause corrosion on metal surfaces.

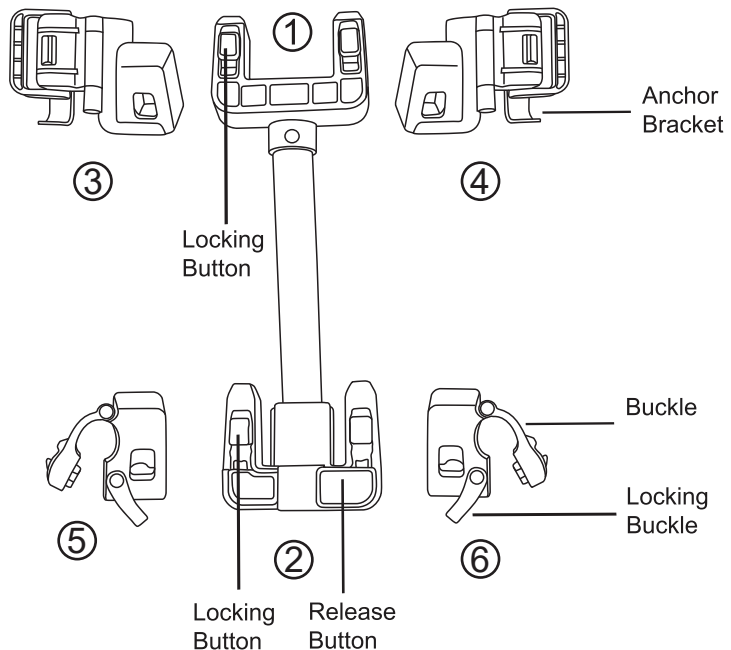
Storage:

To prevent damage to plastic parts, store away from extreme heat.

Parts List

Thank you for choosing Evolur and congratulations on joining The DOM Family, a family that has been transforming lives for 30 years! We appreciate your feedback and wish you the very best in the coming years with your new addition. If you have any questions or concerns please don't hesitate to reach out and a trusted DOM representative will assist you. Thank you again for entrusting us to supply you with the safest, functional and affordable baby products and accessories. Feel free to follow us on Facebook and Instagram for further opportunities and offers.

Please check to make sure that all of the following parts listed are included in the box when opened. If there are any missing parts, please contact Evolur before using the Infinity twin connector.



① Connector Front

② Connector Back

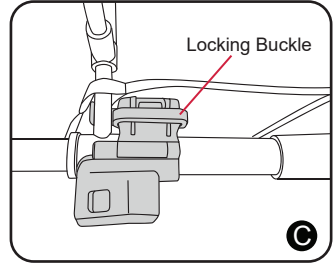
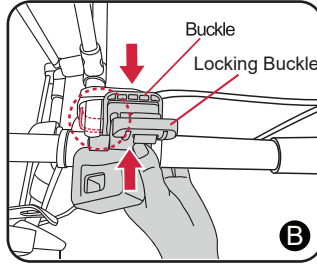
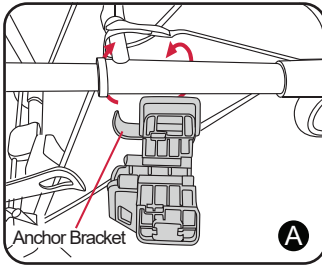
③ Connector Receiver Front Left

④ Connector Receiver Front Right

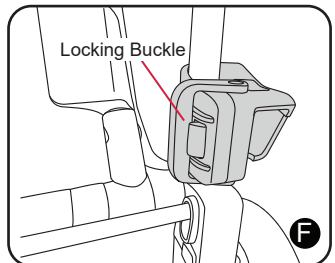
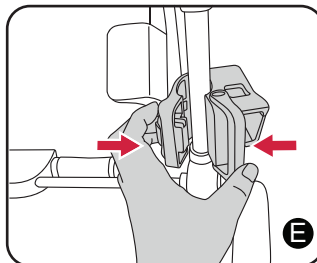
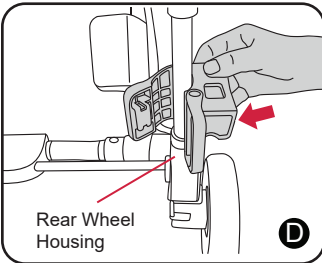
⑤ Connector Receiver Back Left

⑥ Connector Receiver Back Right

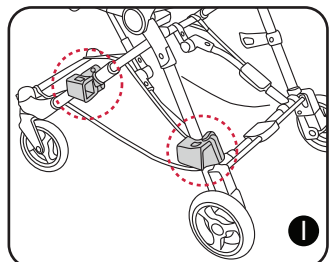
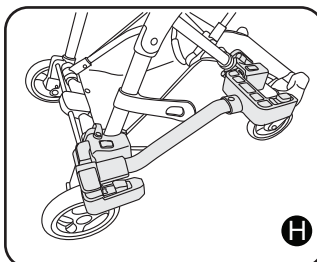
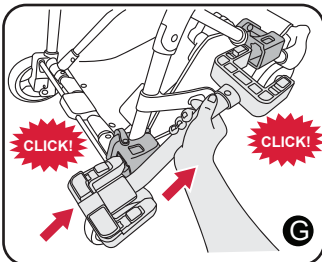
Install the Twin Connector



1. Install Connector Receiver F/L: Attach Connector Receiver F/L to the front leg of your Infinity stroller. Make sure that the Anchor Bracket is in position as in Fig. A/B. Then, clamp the buckle and lock the Connector Receiver F/L using the Locking Buckle. Fig. C.



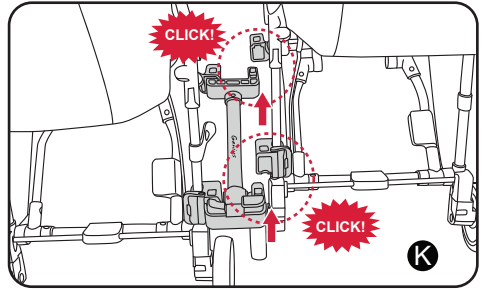
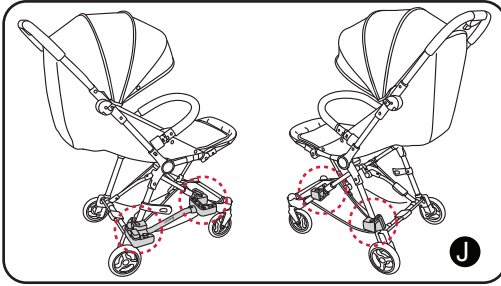
2. Install Connector Receiver B/L: Attach Connector Receiver B/L to the rear leg your Infinity stroller. Clamp the buckle on the lower most part of the leg as shown in Fig. D/E. Then, clamp the buckle and lock the Connector Receiver B/L using the Locking Buckle. Fig. F.



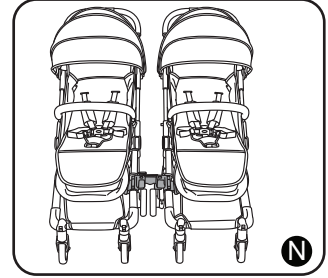
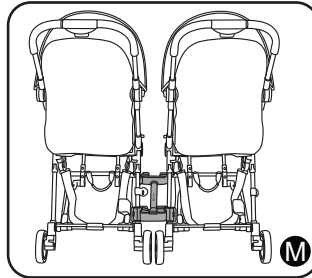
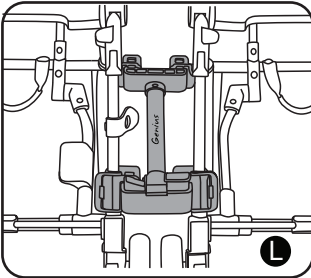
3. Slide Connector Front into Connector Receiver F/L and Connector Back into Connector Receiver B/L. Make sure that both locking buttons click.

4. Repeat A - F to install Connector Receiver F/R and Connector Receiver B/R to the right side of your Infinity stroller. Fig. I

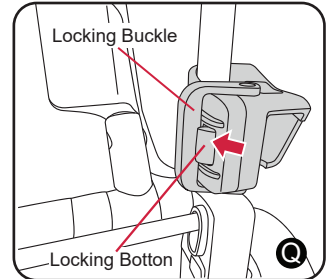
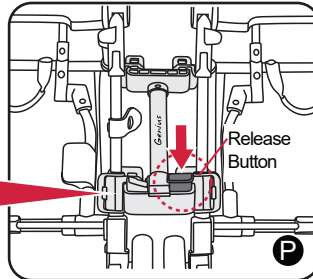
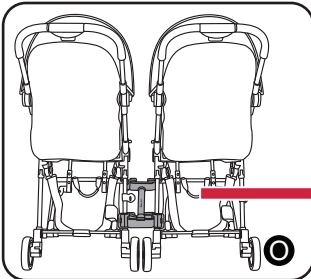
Install the Twin Connector



5. Connect to twin stroller: Slide Connector Front/Back into Connector Receiver F/R & B/R at same time. You can hold one stroller with one hand and push the other stroller into the connector. Make sure that both locking buttons click as shown in Fig. J/K.



6. Twin Stroller, Fig. L/M/N.



7. To Separate the stroller, simply to push down the Release Button, then push forward on the Infinity stroller on the right, as shown in Fig. O/P.

8. To detach the Connector Receivers when Twin stroller function is not needed, simply push the locking button on the Connector Receiver and un-clamp locking buckle, as shown in Fig. Q

⚠ Attention: Remove Connector Set before folding the stroller.

Dream On Me Inc.

1532 S Washington Ave, Piscataway TWP, NJ 08854

Tel: 732-752-7220 Fax: 732-752-7221

MADE ZHONG SHAN, CHINA



1532, S. Washington Avenue
Piscataway, NJ 08854
E-mail: info@evolurbaby.com

www.evolurbaby.com

Follow us on



@EvolurBaby



@evolurbaby

to get your nursery featured on our social media.

Enter our monthly giveaway!

Simply scan the QRcode to register.



Chat with us!

For any questions or concerns or feedback.

